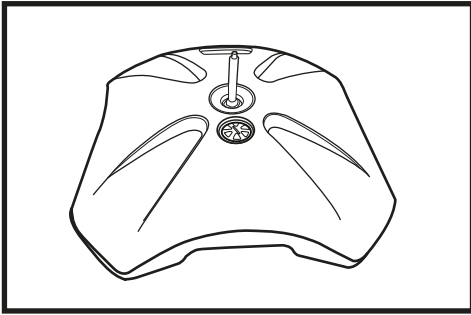
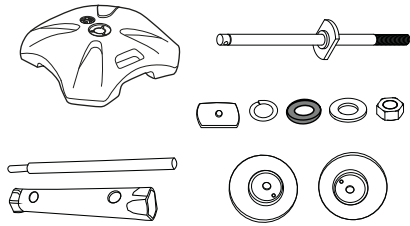


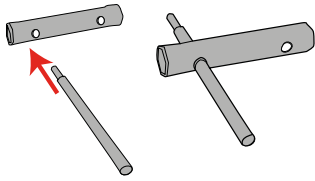
# Stackable Water Base



## PARTS (NOT TO SCALE)



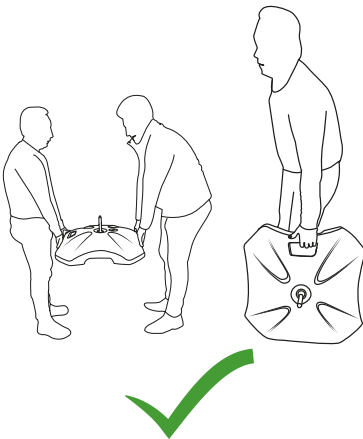
## ASSEMBLY OF BOX SPANNER



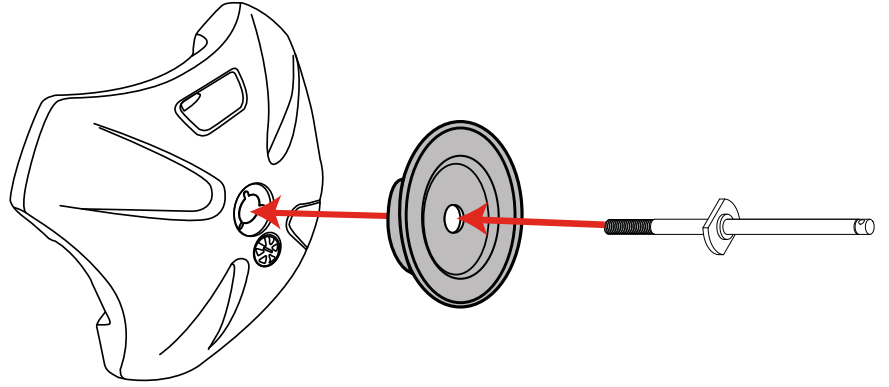
## TOOLS REQUIRED



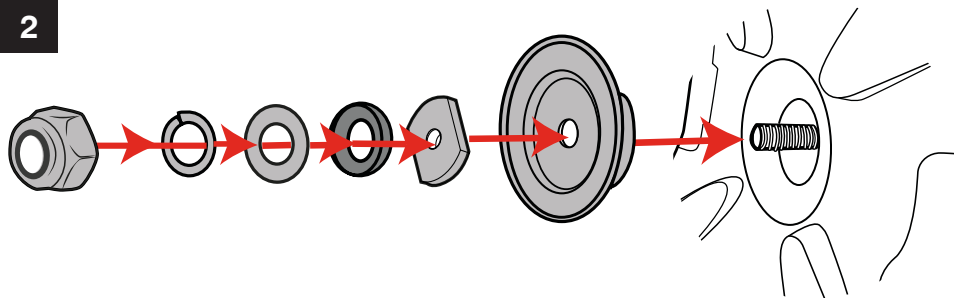
## FOR ATTENTION



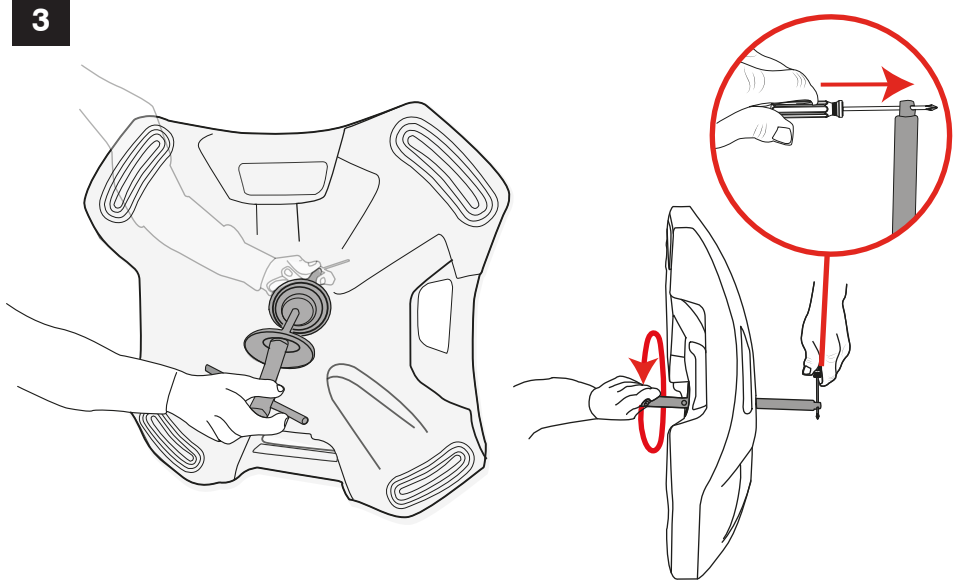
1



2

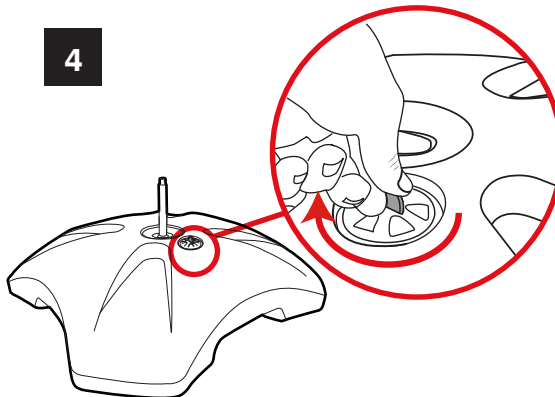


3

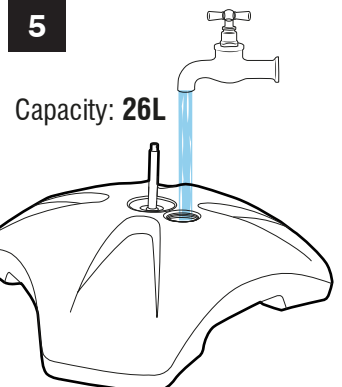


**NOTE: USE SCREWDRIVER AND BOX SPANNER TO TIGHTEN SPIGOT**

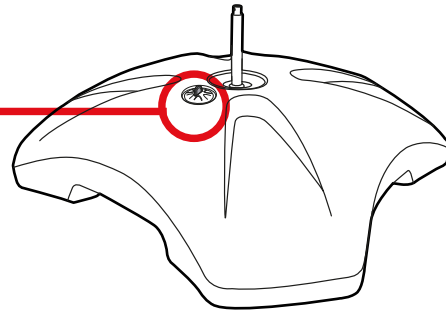
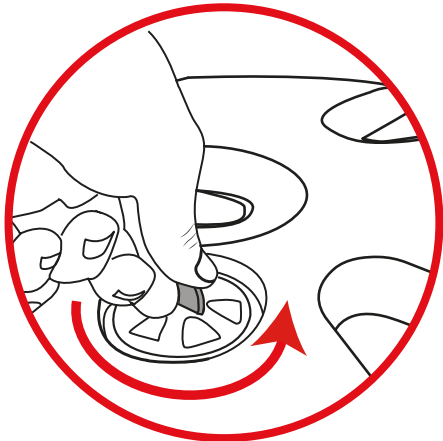
4



5



6

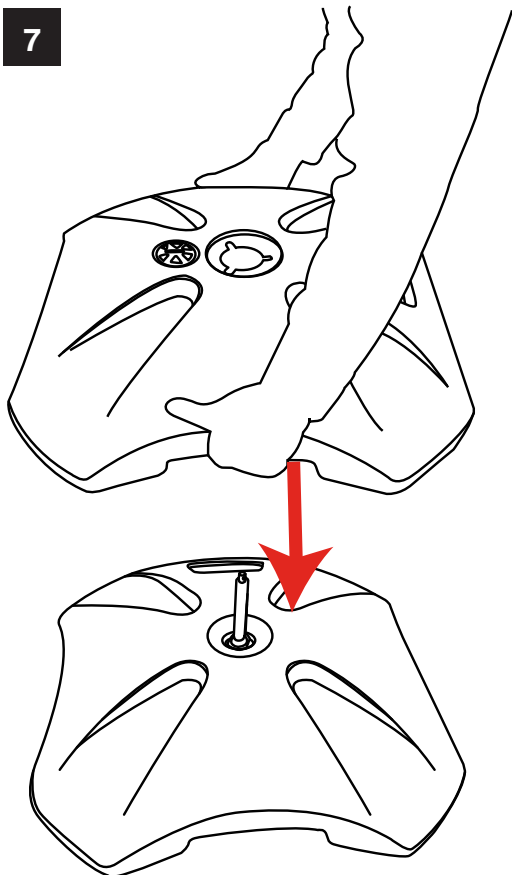


**NOTE: TIGHTEN WITH A COIN**

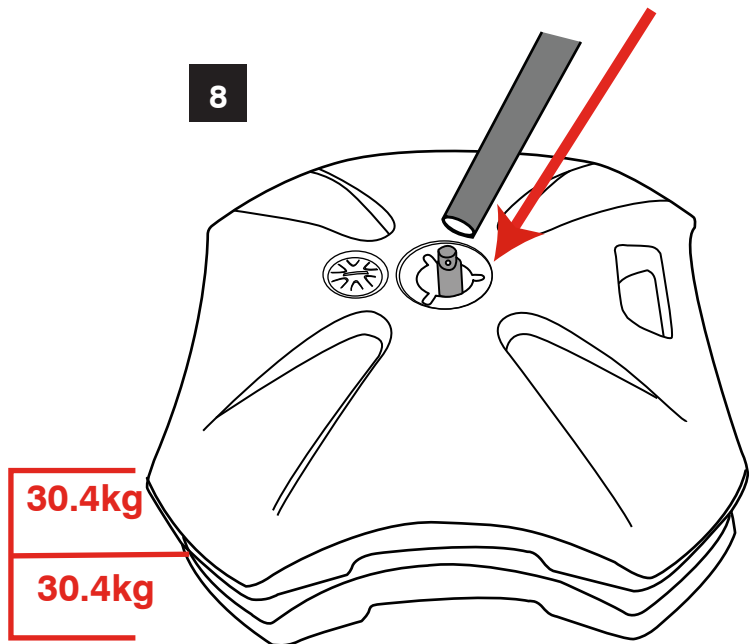


## STACKING THE BASES

7



8



30.4kg

30.4kg

**TOTAL WEIGHT UP TO 60.8KG**